

## Adaptive optics

### Large aperture

- 150mm & 250mm diameter one-piece mirrors

### Electronics and software

- 64 volt driver module with user-friendly control program

# high power laser technology



## Beam diagnostics

### Beam profiling

- radial shear interferometer
- 4-beam imaging system

### Ultra short pulse measurement

- autocorrelator

# high power laser technology

# disc amplifiers



**rutherford**  
optics



## **Disc amplifiers**

### **Large aperture laser amplification**

- 108mm, 150mm, 208mm beam diameter

### **Higher performance**

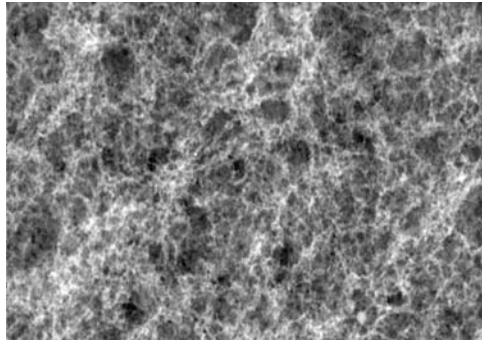
- large uniform gain profiles

# high power laser technology

CCLRC Rutherford Appleton Laboratory, Chilton, Didcot, OX11 0QX Tel: +44 1235 778275  
[www.rutherfordoptics.com](http://www.rutherfordoptics.com)



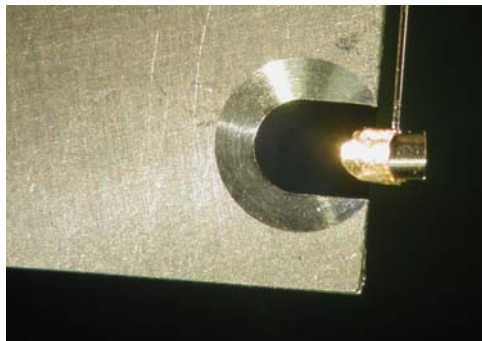
**rutherford**  
optics



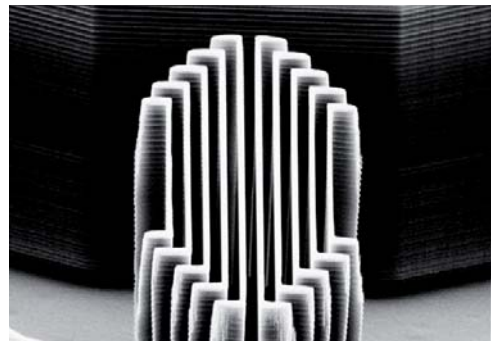
Ultra low density copper metal deposit



Advanced Fast Ignition target



Shielded X-ray back lighter



Wafer fabricated vane target

## Target fabrication

### Microassembly

- high precision novel microtargets

### Coatings

- co-deposits & textured coatings

### Expertise

- micromachining & MEMS techniques

# high power laser technology



**rutherford**  
optics

**Rutherford Optics is a world leader in high power laser components and systems.**

**We are backed by the unrivalled technical expertise of the Central Laser Facility at the CCLRC's Rutherford Appleton Laboratory.**

**Rutherford Optics can meet your high power laser technical requirements.**

## high power laser technology