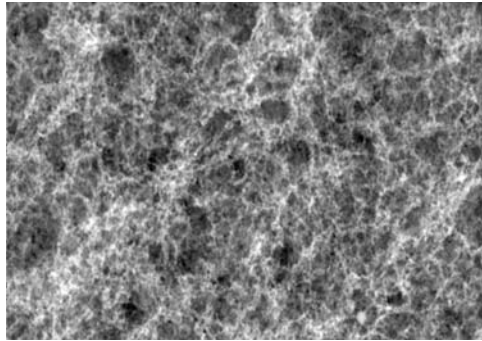
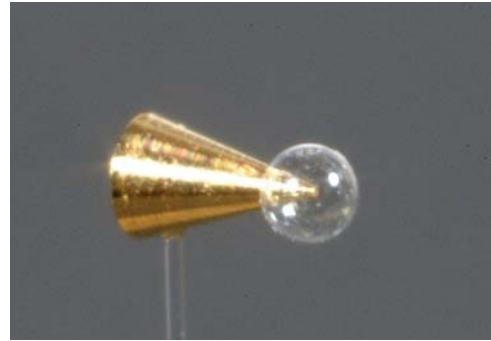




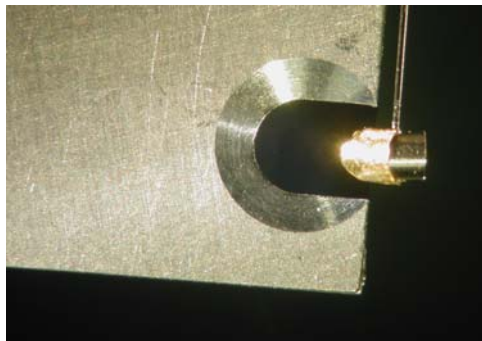
**rutherford**  
optics



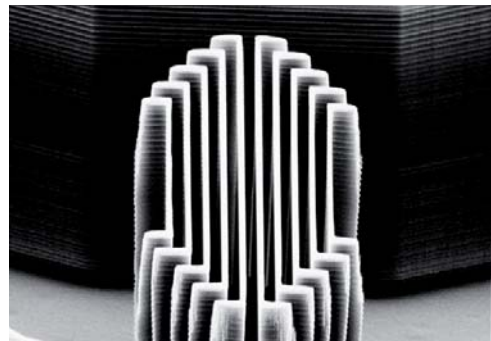
Ultra low density copper metal deposit



Advanced Fast Ignition target



Shielded X-ray back lighter



Wafer fabricated vane target

## Target fabrication

### Microassembly

- high precision novel microtargets

### Coatings

- co-deposits & textured coatings

### Expertise

- micromachining & MEMS techniques

# high power laser technology